

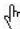
# DVR QUICK START GUIDE

VDT2304FD  
VDT2308FD  
VDT2316FD



## 1. Install Hard Drive & DVD Writer

### 1.1 Install Hard Drive

 **Notice:** 1. this series support eight SATA hard drives or support seven SATA hard drives plus one DVD writer. Please use the hard drive the manufacturers recommend specially for security and safe field.

2. Please calculate HDD capacity according to the recording setting. Please refer to “Appendix B Calculate Recording Capacity”.

**STEP1** Unscrew and Open the top cover

**STEP2** Connect the power and data cables. Place the HDD onto the bottom case as below.



Fig 1.1 Connect HDD

**STEP3** Screw the HDD

**Note:** For the convenience to install, please connect the power and data cables firstly, and then screw to fix.

### 1.2 Install DVD Writer

**STEP1** Unscrew and Open the top cover, connect the power and data cables. Place the DVD writer onto the bottom case as below.

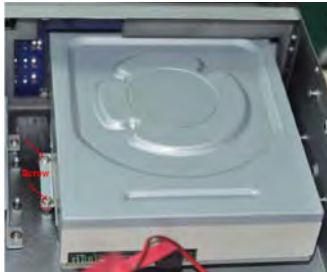


Fig 1.2 Connect the DVD Writer

**STEP2** Screw the DVD writer.

## 2. Connections

## 2.1 Rear view for 4-ch DVR

**Note: the USB port on rear panel can only connect to USB mouse.**

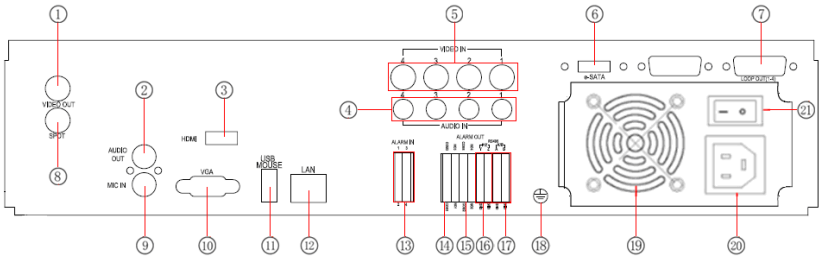


Fig 2.1 Rear view for 4-ch DVR

1	Video out: Connect to monitor	2	Audio output, connect to the sound box
3	Connect to high-definition display device	4	4 CH Audio input
5	Video input channels from 1-4	6	Connect to HDD for backup (optional)
7	Loop out; for outputting 1-4ch image independently	8	Connect to monitor as an AUX output channel by channel. Only video display, no menu show
9	MIC IN: talk	10	VGA output, connect to monitor
11	connect to USB mouse	12	Network port
13	Connect to external sensor1-4	14	4ch relay output. Connect to external alarm
15	Grounding	16	Connect to speed dome
17	Connect to keyboard	18	Grounding
19	For cooling the device	20	POWER INPUT
21	Switch on/off		

## 2.2 Rear view for 8-ch DVR

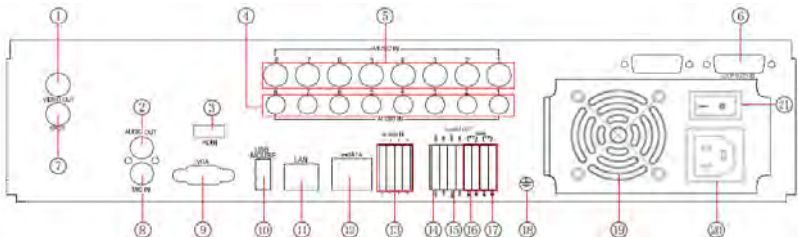
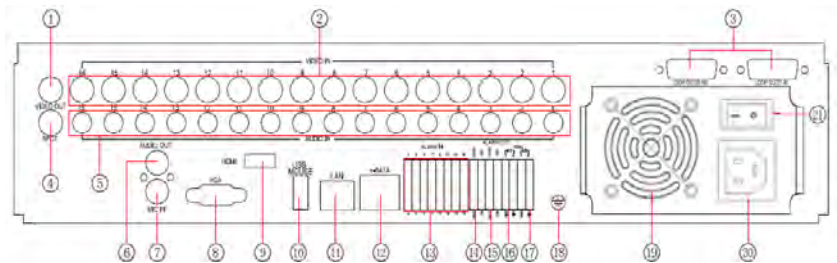


Fig 2.2 Rear view for 8-ch DVR

1	Video out: Connect to monitor	2	Audio output, connect to the sound box
3	Connect to high-definition display device	4	8 CH Audio input
5	Video input channels from 1-8	6	Loop out; for outputting 1-8ch image independently

7	Connect to monitor as an AUX output channel by channel. Only video display, no menu show	8	MIC IN: talk
9	VGA output, connect to monitor	10	connect to USB mouse
11	Network port	12	Connect to HDD for backup (optional)
13	Connect to external sensor1-8	14	4ch relay output. Connect to external alarm
15	Grounding	16	Connect to speed dome
17	Connect to keyboard	18	Grounding
19	For cooling the device	20	POWER INPUT
21	Switch on/off		

### 2.3 Rear view for 16-ch DVR



2.3 Rear view for 16-ch DVR

1	Video out: Connect to monitor	2	Video input channels from 1-16
3	Loop out; for outputting 1-16ch image independently	4	Connect to monitor as an AUX output channel by channel. Only video display, no menu show
5	16 CH Audio input	6	Audio output, connect to the sound box
7	MIC IN: talk	8	VGA output, connect to monitor
9	Connect to high-definition display device	10	connect to USB mouse
11	Network port	12	Connect to HDD for backup (optional)
13	Connect to external sensor1-16	14	4ch relay output. Connect to external alarm
15	Grounding	16	Connect to speed dome
17	Connect to keyboard	18	Grounding
19	For cooling the device	20	POWER INPUT
21	Switch on/off		

## 3. Power on

**STEP1** Step1: connect with the source power; switch on the power button near the power port on the rear panel

**STEP2** Step2: the device will be loaded, and the power indicator will display blue

**STEP3** Step3: before start, a WIZZARD window will be pop-up and show some information about time zone, time setup, network configuration, record configuration and disk management. User can setup here and refer to the concrete setup steps from the corresponding chapters. If users don't want to setup Wizard, please click Exit button to exit. After the device power on, if there is no menu or only has live image display, user can long press ESC button to switch.

**Notice:** *this serial device can only display menu on VGA monitor or BNC monitor at one time, if there is live image display without menu display, please check up whether other device has menu display firstly, or long press ESC key to wait for login dialog box to appear. Long press ESC key can switch the output between BNC and VGA.*

## 4. Basic setup

### 4.1 Accessing the DVR menus

#### 4.1.1 Login

Press the MENU button which will bring the LOGIN dialogue box and enter the user name: admin and password: 123456



Fig 4.1 Login

#### 4.1.2 Main menu setup

Click right mouse, or press ENTER button on the front panel can enter into the main menu. Menu-System refer to Fig 4.2

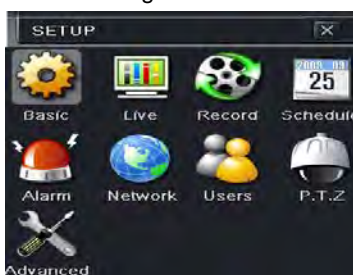


Fig 4-2 Main menu setup

**Basic configuration:** user can set video system, menu language, audio, time and authorization check.

**Live configuration:** User can set name/time display, picture color and hide cameras.

**Record configuration:** User can set record quality, frame rate, resolution, time stamp and recycle.

Schedule configuration: users can set schedule for timer, motion detection, and sensor alarm respectively.

Alarm configuration: users can set sensor type, alarm trigger and buzzer alarm.

Network configuration: Users enable network function, and configure IP address, DDNS, transmission video parameters here.

User configuration: Administrator can add, delete users, and change their authorization

PTZ configuration: users can set protocol, baud rate, address, presets and auto cruise track here.

Advanced configuration: users can reboot the device and import & export data into or from mobile storage medium.

## 4.2 DVR recording modes

User need to install and format a HDD, and set all the recording parameters before recording. There are four kinds of record modes.

### 4.2.1 Manual Recording

User can press REC button on the front panel after quitting system setup. Press this button again to stop recording.

Or press REC button on remote controller, click again to stop.

Or click REC button on the tool bar with mouse, click again to stop.

### 4.2.2 Schedule Recording

Enter into main menu—schedule configuration (refer to Fig 4-3). Users can set different schedule time for every day in one week. If user wants a special schedule for one day can use Holiday function.

The column means the seven days of a week from Monday to Sunday, the row means 24 hours of a day. Click the grid to do relevant setup. Blue means checked area, gray means unchecked area.

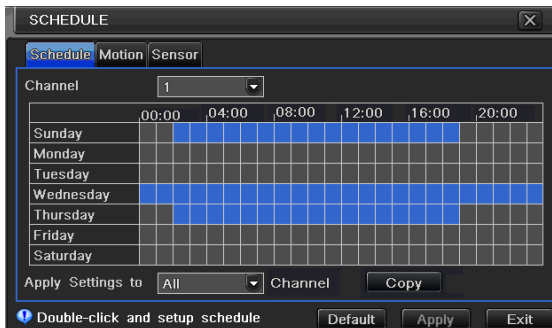


Fig 4-3 Schedule record setup

### 4.2.3 Motion Detection Recording

Motion detection recording: when there is a motion event detected, the camera will be triggered to record and have an alarm out.

Enter into main menu-alarm configuration-motion configuration (refer to Fig 4-4), enable Detection first;

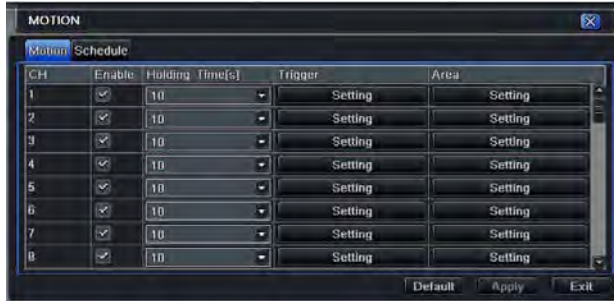


Fig 4-4 Motion detection interface

Enter Motion detection area (refer to Fig 4-5) to set Sensitivity and Detection area.



Fig 4-5 motion detection area setup

#### 4.2.4 Alarm Recording

Enter into main menu-Alarm configuration-Sensor alarm (refer to Fig 4-6), enable Detection first, setup the device type.



Fig 4-6 sensor alarm record


Enter into Trigger configuration, select alarm out and recording cameras and linked PTZ; set Alarm out hold time and Buzzer hold time. Click OK to save

settings.

### 4.3 Playback

This unit supports live record playback, time search and event search. It displays full or 4 screens in playback.

#### 4.3.1 Live playback

Click Play  button to playback the record. Refer to Figure4-7. User can do concrete operation by click the buttons on screen.

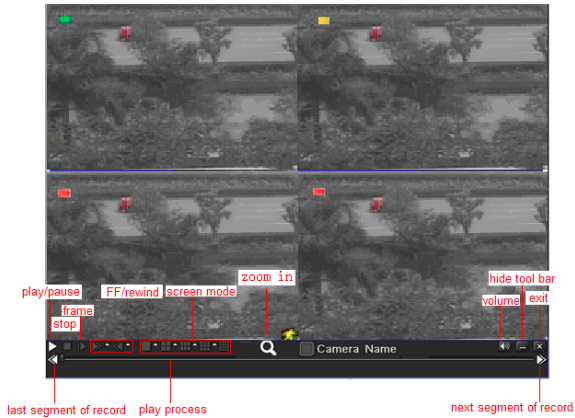


Fig 4-7 live playback

#### 4.3.2 Time search

Enter into Search configuration, select Time search. If it recorded in a certain day, the date will show highlight.

Select a date, press Search button, click the time grid to set the play start time or input play record time manually. The selected time match the blue grid.

Click Play button. It will play from the time point where user set.

Click the relative buttons on the screen to do fast forward/rewind, pause, stop, and change the screen mode and re-search.

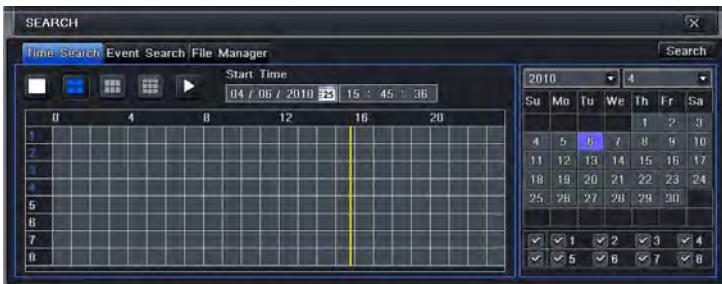


Fig 4-8 time search

#### 4.3.3 Event search

Enter into Search configuration, select Event search (refer to Fig 4-9), and choose a certain day in the event search interface.

Click Search button, the searched event information will displayed in the event list box, user can select date, channel, tick off Motion, Sensor or All accordingly.

Double click a video file to playback.

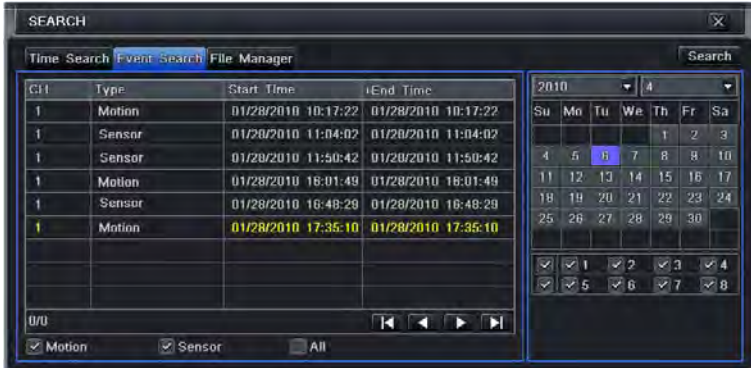


Fig 4-9 Event search

#### 4.4 Back up

This unit supports backup by built-in SATA DVD Writer, with USB Flash and USB HDD.

Install DVD Writer (refer to Chapter1.2), enter into Backup interface (refer to Fig 3-10), set the start & end time, select channels, click Search button; the searched data will be displayed in the data backup list box.

Press Backup button, it will begin to write video from HDD inside DVR to backup device. Click Start button to start backup.

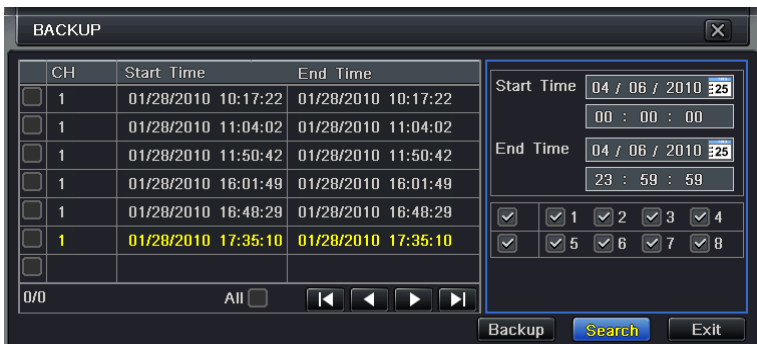


Fig 4-10 Backup setup

## 5. Remote Surveillance

To making remote access, the DVR should be connecting to LAN or Internet. There are three kind of method for remote accessing.

### 5.1 Using DHCP to get IP address automatically

Click the Menu button, enter into System—Network configuration (refer to Fig 5-1), enable DHCP in the both the DVR and the router.

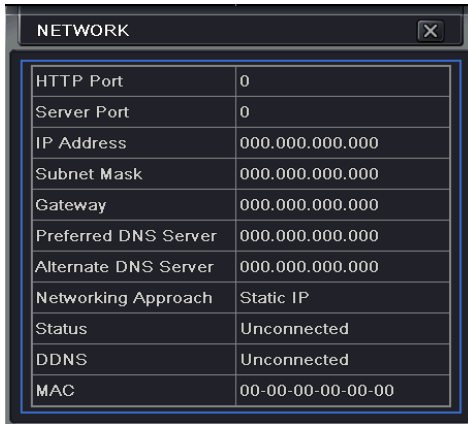


Fig 5-1 Network configuration

Enter Video to set network video parameters like resolution, frame rate etc.

Open an IE browser on computer on the same LAN. Input the IP address of the DVR in IE address blank and enter.

IE will download ActiveX automatically. Then a window pops up and asks for user name and password.

Input name and password correctly (the default user name is admin and the password is 123456), and enter. It will show the remote picture.

**Note: If the ActiveX cannot be downloaded or installed, please refer to Appendix A Q7 in the user manual.**

### 5.2 Access DVR on WAN

Input IP address, Subnet, Gateway. If using DHCP, please enable DHCP in both the DVR and router.

Enter Video to set network video parameters like resolution, frame rate etc.

Forward IP address and port number in Virtual Server setup of the router or virtual server. Close firewall.

If users want to utilize dynamic domain name, need apply for a domain name in a DNS server supported by the DVR or router. Then add to the DVR or router.

Open IE browser, input IP address, or dynamic domain name and enter. If HTTP port is not 80, add the port number after IP address or domain name.

IE will download ActiveX automatically. Then a window pops up and asks for

user name and password.

Input name and password correctly, and enter to view.

### **5.3 Connect the DVR to Internet through dial-up ADSL**

Input IP address, Subnet, Gateway gotten from your ISP. If using ADSL, please input user name and password, and click OK. The DVR will connect the server and show "connection succeeds".

The following steps are the same as STEP4-7 of the connection way above.

If users want to utilize dynamic domain name, need apply for a domain name in a DDNS server supported by the DVR or router. Then add to the DVR or router.

Open IE browser, input IP address, or dynamic domain name and enter. If HTTP port is not 80, add the port number after IP address or domain name.

IE will download ActiveX automatically. Then a window pops up and asks for user name and password.

Input name and password correctly, and enter to view.